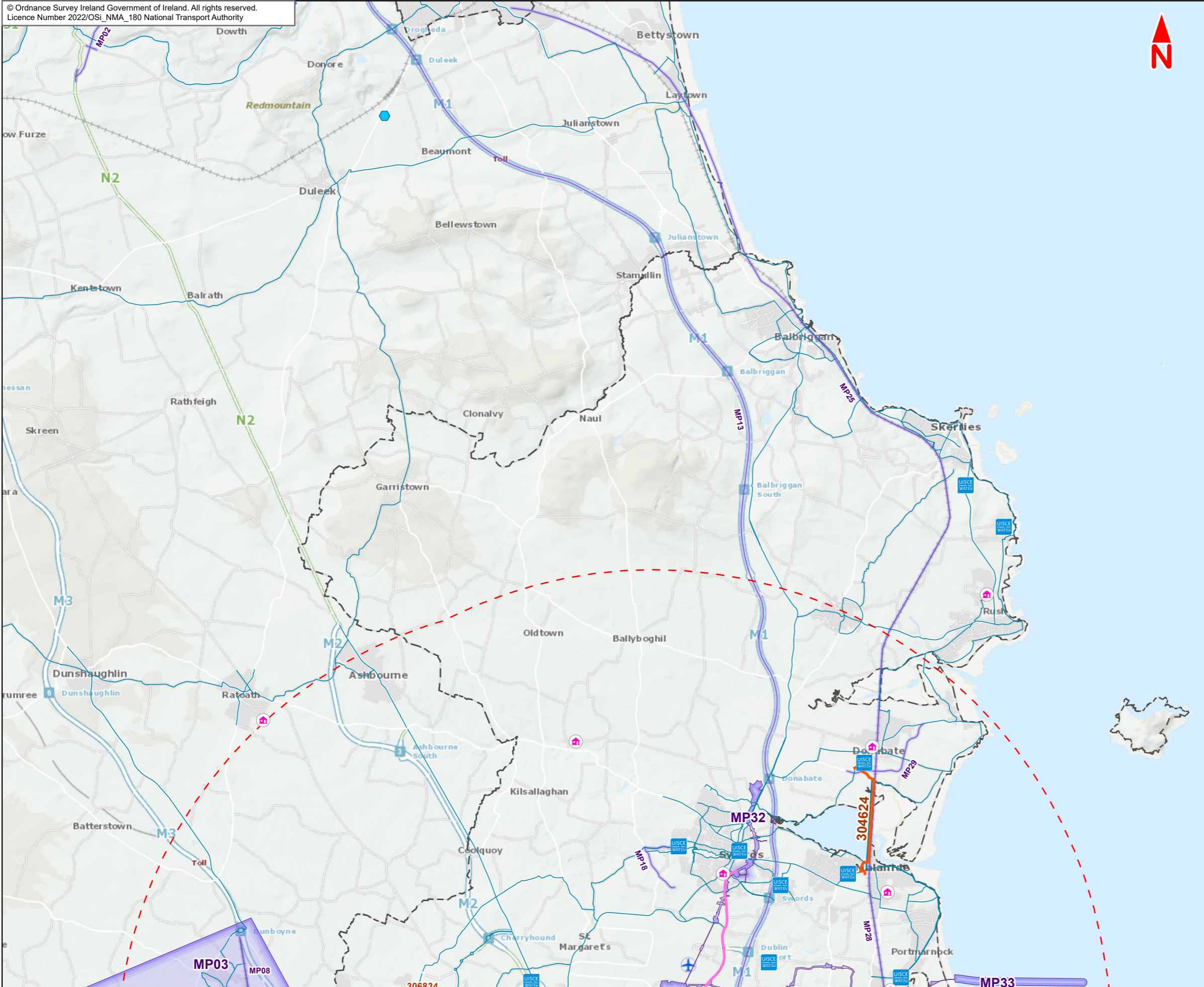


The background features a vibrant yellow field with abstract, overlapping shapes in dark blue, light blue, and teal. Several white circles of varying sizes are scattered throughout, some appearing as if they are part of the larger shapes. The overall style is modern and graphic.

## 21.1 Cumulative Effects: Shortlisted Strategic Development and Major Projects



**Legend :**

- Ballymun/Finglas to City Centre Core Bus Corridor Scheme
- 🏠 Strategic Housing Development (SHD)
- 🔵 River Poddle Flood Alleviation Scheme site (SID)
- 🏢 Artane Lead Service Replacement Works
- Greater Dublin Area (GDA) Cycle Network Plan
- ⬤ Strategic Infrastructure Development (SID)
- Strategic Infrastructure Development (SID)
- ▭ Strategic Infrastructure Development (SID)
- Other major project (linear)
- ▭ Other major project
- ▭ Local authority boundary

This drawing is not to be used in whole or in part other than for the intended purpose and project as defined on this drawing. Contains Irish Public Sector Data licensed under a Creative Commons Attribution 4.0 International (CC BY 4.0) license.



**Disclaimer**  
a. © National Transport Authority (NTA) 2022. This drawing is confidential and the copyright in it is owned by NTA. This drawing must not be either loaned, copied or otherwise reproduced in whole or in part or used for any purpose without the prior permission of NTA.  
b. This drawing is to be used for the design element identified in the titleblock. Other information shown is to be considered indicative only. The drawing is to be read in conjunction with all other relevant design drawings.  
c. O.S. data used for plans are printed under © Ordnance Survey Ireland Government of Ireland. All rights reserved. Licence Number 2022/OSI\_NMA\_180 National Transport Authority. All elevations are in metres and relate to OSI Geoid Model (OSGM15) Mean Head. All Co-ordinates are in Irish

Transverse Mercator Grid (ITM) as defined by OSI active local GPS station.  
d. Information concerning the position of apparatus shown on this drawing is based on drawings supplied by the utility owners and/or the utility works contractor, whilst every care has been taken in the preparation of this drawing, positions should be taken as approximate and are intended for general guidance only and no representation is made by the NTA as to the accuracy, completeness, sufficiency or otherwise of this drawing and the position of the apparatus. The information contained herein does not purport to be comprehensive or final as the apparatus is subject to being altered and/or superseded. Recipients should not rely on this information. Any liabilities are hereby expressly disclaimed.

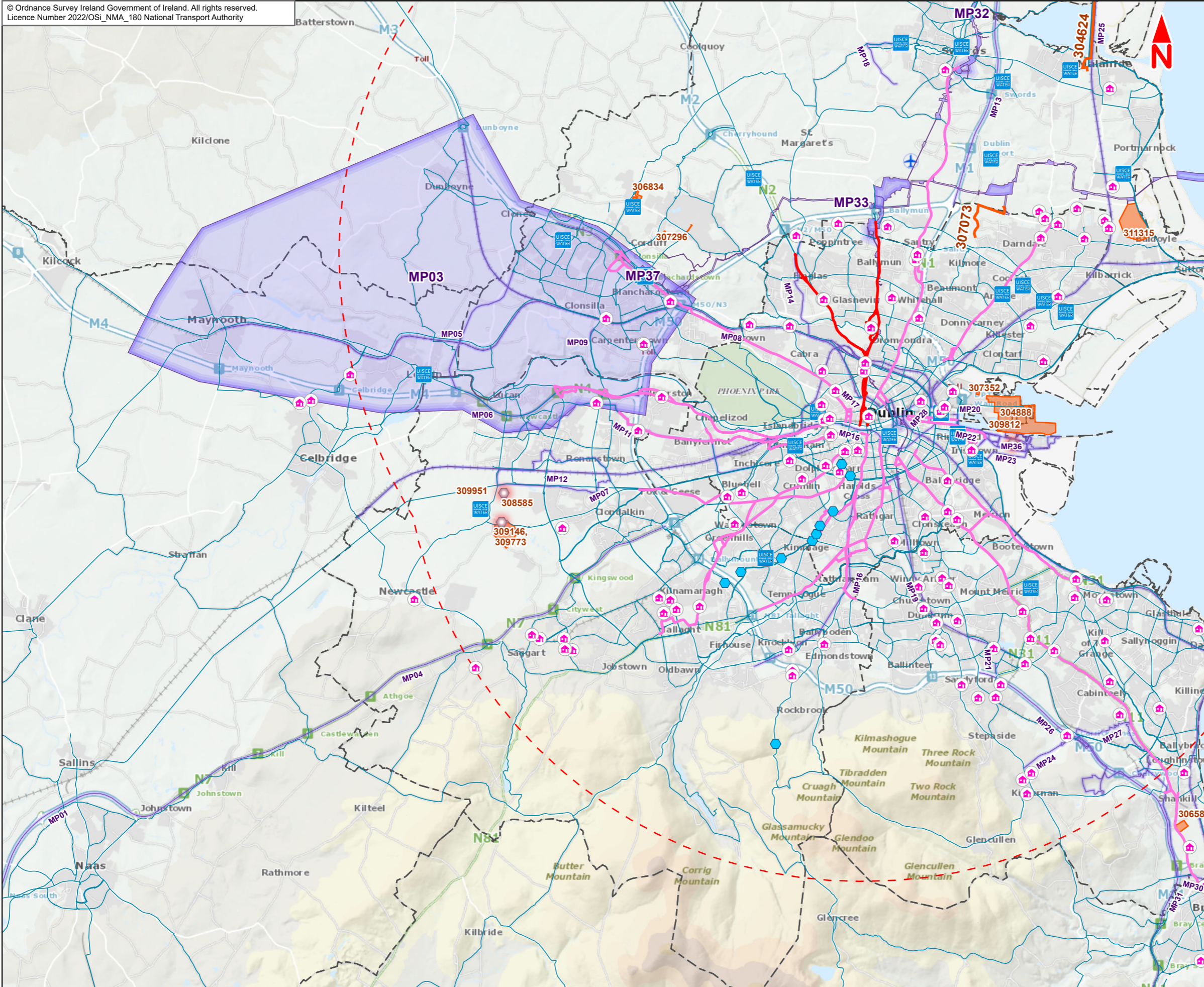
e. The information contained herein has been provided by the NTA but does not purport to be comprehensive or final. Recipients should not rely on the information. Neither the NTA nor any of its directors, officers, employees, agents, stakeholders or advisers make any representation or warranty as to, or accept any liability or responsibility in relation to, the adequacy, accuracy, reasonableness or completeness of the information provided as part of this document or any matter on which the information is based (including but not limited to loss or damage arising as a result of reliance by recipients on the information or any part of it. Any liabilities are hereby expressly disclaimed.



| Rev | Date     | Drn | Chk'd | App'd | Description                  |
|-----|----------|-----|-------|-------|------------------------------|
| M01 | Jul 2022 | KJ  | PW    | DK    | ISSUE FOR PHASE 4 : PLANNING |

|  |                         |   |               |                |
|--|-------------------------|---|---------------|----------------|
| Client<br><b>NTA</b><br>Udarás Náisiúnta Iompair<br>National Transport Authority |                         | Consultant<br><b>JACOBS</b><br><b>ARUP SYSTRA</b> |               |                |
| Date<br>14/07/2022   | Scale @ A3<br>1:125,000 | Drawn<br>KJ                                       | Checked<br>PW | Approved<br>DK |
| Project Code<br>BCIDE  | Originator Code<br>JAC  | QMS Code  |               |                |

|  |                        |             |            |  |
|--|------------------------|-------------|------------|--|
| Programme Title<br><b>BUSCONNECTS DUBLIN</b><br><b>CORE BUS CORRIDORS INFRASTRUCTURE WORKS</b>   |                        |             |            |  |
| Drawing Title<br>Ballymun/Finglas to City Centre Core Bus Corridor Scheme<br>Figure 21.1<br>Cumulative Effects: Shortlisted Strategic Development and Major Projects |                        |             |            |  |
| Drawing File Name<br>BCIDE-JAC-ENV_BC-0304_XX_00-DR-GG-0101  | Sheet Number<br>1 of 3 | Status<br>A | Rev<br>M01 |  |



- Legend :**
- Ballymun/Finglas to City Centre Core Bus Corridor Scheme
  - Strategic Housing Development (SHD)
  - River Poddle Flood Alleviation Scheme site (SID)
  - Artane Lead Service Replacement Works
  - Other Core Bus Corridor: indicative route
  - Greater Dublin Area (GDA) Cycle Network Plan
  - Strategic Infrastructure Development (SID)
  - Strategic Infrastructure Development (SID)
  - Strategic Infrastructure Development (SID)
  - Other major project (linear)
  - Other major project
  - Local authority boundary

This drawing is not to be used in whole or in part other than for the intended purpose and project as defined on this drawing. Contains Irish Public Sector Data licensed under a Creative Commons Attribution 4.0 International (CC BY 4.0) license.



**Disclaimer**  
a. © National Transport Authority (NTA) 2022. This drawing is confidential and the copyright in it is owned by NTA. This drawing must not be either loaned, copied or otherwise reproduced in whole or in part or used for any purpose without the prior permission of NTA.  
b. This drawing is to be used for the design element identified in the titleblock. Other information shown is to be considered indicative only. The drawing is to be read in conjunction with all other relevant design drawings.  
c. O.S. data used for plans are printed under © Ordnance Survey Ireland Government of Ireland. All rights reserved. Licence Number 2022/OSI\_NMA\_180 National Transport Authority. All elevations are in metres and relate to OSI Geoid Model (OSGM15) Mean Head. All Co-ordinates are in Irish

Transverse Mercator Grid (ITM) as defined by OSI active local GPS station.  
d. Information concerning the position of apparatus shown on this drawing is based on drawings supplied by the utility owners and/or the utility works contractor, whilst every care has been taken in the preparation of this drawing, positions should be taken as approximate and are intended for general guidance only and no representation is made by the NTA as to the accuracy, completeness, sufficiency or otherwise of this drawing and the position of the apparatus. The information contained herein does not purport to be comprehensive or final as the apparatus is subject to being altered and/or superseded. Recipients should not rely on this information. Any liabilities are hereby expressly disclaimed.

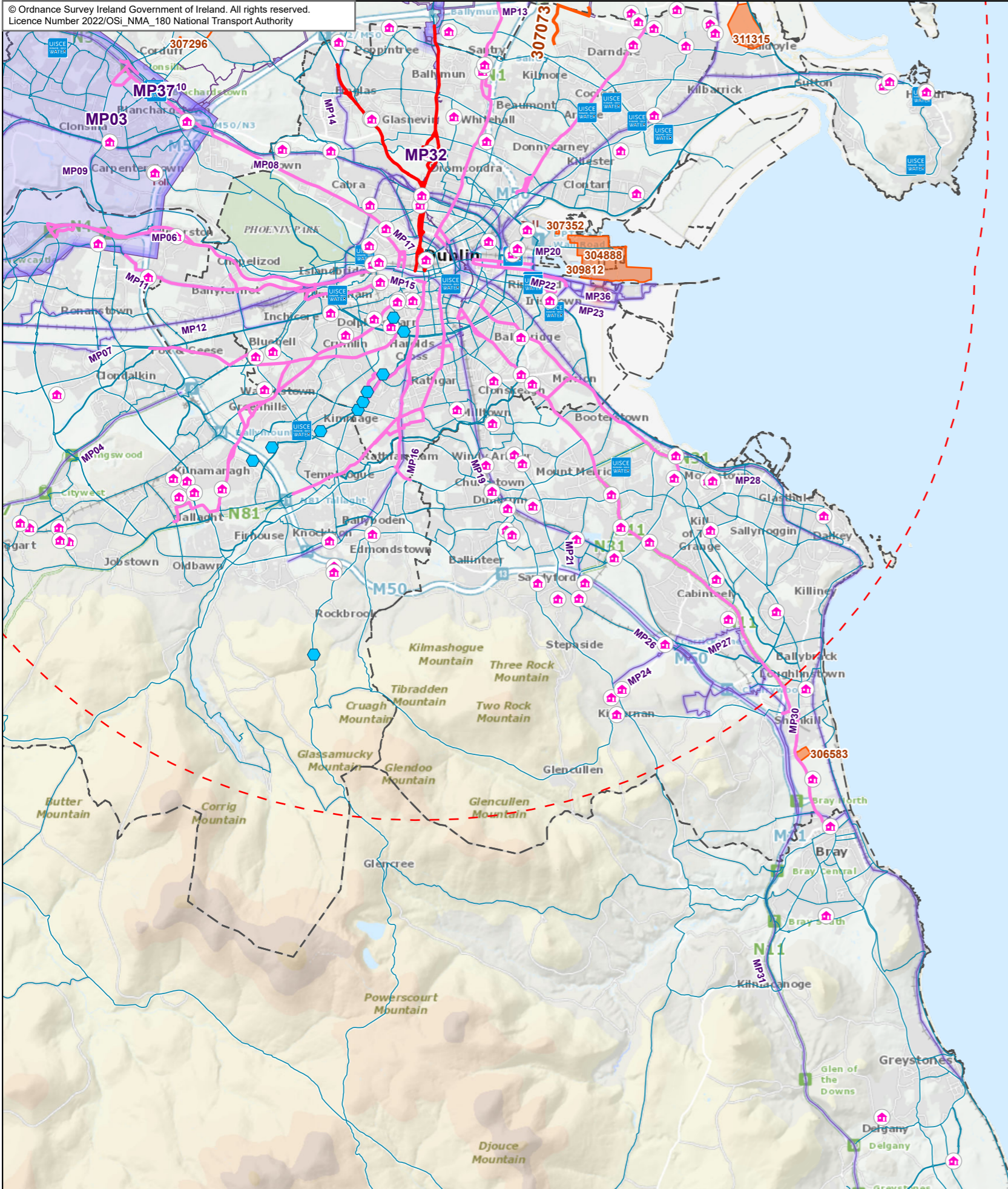
e. The information contained herein has been provided by the NTA but does not purport to be comprehensive or final. Recipients should not rely on the information. Neither the NTA nor any of its directors, officers, employees, agents, stakeholders or advisers make any representation or warranty as to, or accept any liability or responsibility in relation to, the adequacy, accuracy, reasonableness or completeness of the information provided as part of this document or any matter on which the information is based (including but not limited to loss or damage arising as a result of reliance by recipients on the information or any part of it. Any liabilities are hereby expressly disclaimed.



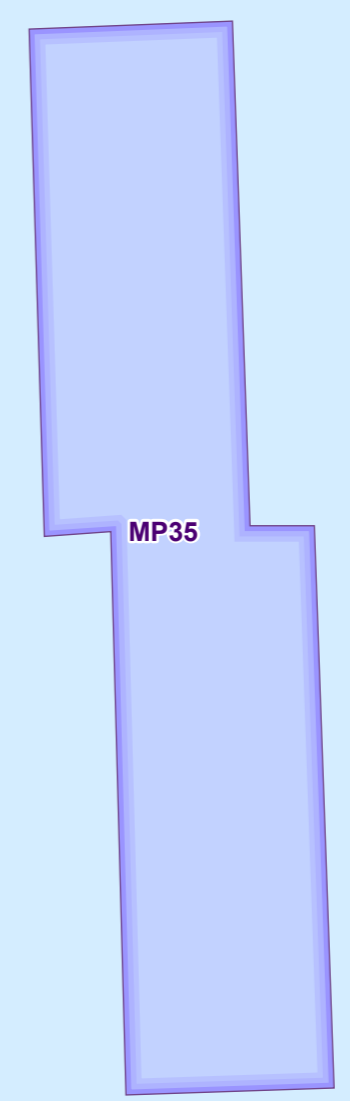
| Rev | Date     | Drn | Chk'd | App'd | Description                  |
|-----|----------|-----|-------|-------|------------------------------|
| M01 | Jul 2022 | KJ  | PW    | DK    | ISSUE FOR PHASE 4 : PLANNING |

|  |                         |   |               |                |
|--|-------------------------|---|---------------|----------------|
| Client<br><b>NTA</b><br>Udarás Náisiúnta Iompair<br>National Transport Authority |                         | Consultant<br><b>JACOBS</b><br><b>ARUP SYSTRA</b> |               |                |
| Date<br>14/07/2022   | Scale @ A3<br>1:125,000 | Drawn<br>KJ                                       | Checked<br>PW | Approved<br>DK |
| Project Code<br>BCIDE  | Originator Code<br>JAC  | QMS Code  |               |                |

|  |                        |             |            |  |
|--|------------------------|-------------|------------|--|
| Programme Title<br><b>BUSCONNECTS DUBLIN</b><br><b>CORE BUS CORRIDORS INFRASTRUCTURE WORKS</b>   |                        |             |            |  |
| Drawing Title<br>Ballymun/Finglas to City Centre Core Bus Corridor Scheme<br>Figure 21.1<br>Cumulative Effects: Shortlisted Strategic Development and Major Projects |                        |             |            |  |
| Drawing File Name<br>BCIDE-JAC-ENV_BC-0304_XX_00-DR-GG-0102  | Sheet Number<br>2 of 3 | Status<br>A | Rev<br>M01 |  |



- Legend :**
- Ballymun/Finglas to City Centre Core Bus Corridor Scheme
  - Strategic Housing Development (SHD)
  - River Poddle Flood Alleviation Scheme site (SID)
  - Artane Lead Service Replacement Works
  - Other Core Bus Corridor: indicative route
  - Greater Dublin Area (GDA) Cycle Network Plan
  - Strategic Infrastructure Development (SID)
  - Strategic Infrastructure Development (SID)
  - Strategic Infrastructure Development (SID)
  - Other major project (linear)
  - Other major project
  - Local authority boundary



This drawing is not to be used in whole or in part other than for the intended purpose and project as defined on this drawing. Contains Irish Public Sector Data licensed under a Creative Commons Attribution 4.0 International (CC BY 4.0) license.



**Disclaimer**

a. © National Transport Authority (NTA) 2022. This drawing is confidential and the copyright in it is owned by NTA. This drawing may not be copied, reproduced, stored in a retrieval system, or otherwise used in any form or by any means, electronic, mechanical, photocopying, recording, or otherwise, without the prior written permission of NTA.

b. This drawing is to be used for the design element identified in the title block. Other information shown is to be considered indicative only. The drawing is to be read in conjunction with all other relevant design drawings.

c. O.S. data used for plans are printed under © Ordnance Survey Ireland Government of Ireland. All rights reserved. Licence Number 2022/OSI\_NMA\_180 National Transport Authority. All elevations are in metres and relate to OSi Geoid Model (OSGM15) Mean Head. All Co-ordinates are in Irish Transverse Mercator Grid (ITM) as defined by OSi active local GPS station.

d. Information concerning the position of apparatus shown on this drawing is based on drawings supplied by the utility owners and/or the utility works contractor, whilst every care has been taken in the preparation of this drawing, positions should be taken as approximate and are intended for general guidance only and no representation is made by the NTA as to the accuracy, completeness, sufficiency or otherwise of this drawing and the position of the apparatus. The information contained herein does not purport to be comprehensive or final as the apparatus is subject to being altered and/or superceded. Recipients should not rely on this information. Any liabilities are hereby expressly disclaimed.


e. The information contained herein has been provided by the NTA but does not purport to be comprehensive or final. Recipients should not rely on the information. Neither the NTA nor any of its directors, officers, employees, agents, stakeholders or advisers make any representation or warranty as to, or accept any liability or responsibility in relation to, the adequacy, accuracy, reasonableness or completeness of the information provided as part of this document or any matter on which the information is based (including but not limited to loss or damage arising as a result of reliance by recipients on the information or any part of it. Any liabilities are hereby expressly disclaimed.



| Rev | Date     | Drn | Chk'd | App'd | Description                  |
|-----|----------|-----|-------|-------|------------------------------|
| M01 | Jul 2022 | KJ  | PW    | DK    | ISSUE FOR PHASE 4 : PLANNING |

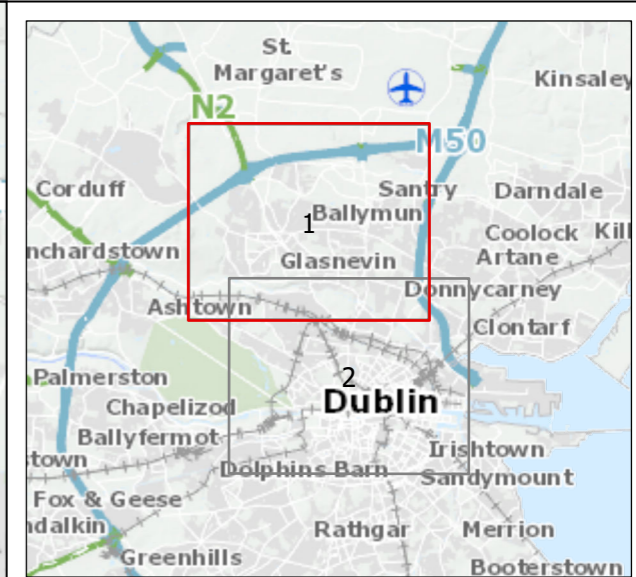
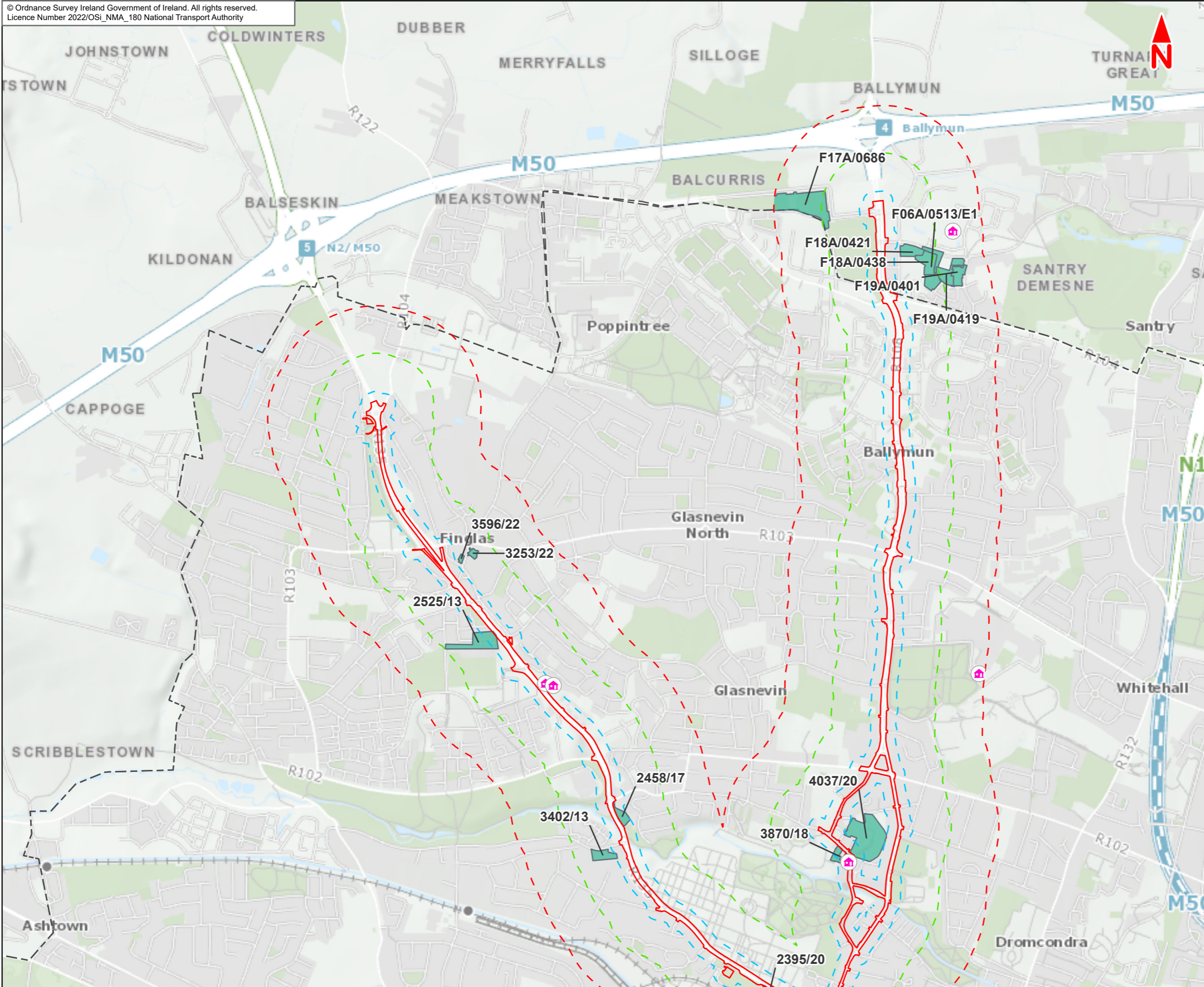
|  |                         |   |               |                |
|--|-------------------------|---|---------------|----------------|
| Client<br><b>NTA</b><br>Udarás Náisiúnta Iompair<br>National Transport Authority |                         | Consultant<br><b>JACOBS</b><br><b>ARUP SYSTRA</b> |               |                |
| Date<br>14/07/2022   | Scale @ A3<br>1:125,000 | Drawn<br>KJ                                       | Checked<br>PW | Approved<br>DK |
| Project Code<br>BCIDE  | Originator Code<br>JAC  | QMS Code  |               |                |

|  |                        |             |            |  |
|--|------------------------|-------------|------------|--|
| Programme Title<br><b>BUSCONNECTS DUBLIN</b><br><b>CORE BUS CORRIDORS INFRASTRUCTURE WORKS</b>   |                        |             |            |  |
| Drawing Title<br>Ballymun/Finglas to City Centre Core Bus Corridor Scheme<br>Figure 21.1<br>Cumulative Effects: Shortlisted Strategic Development and Major Projects |                        |             |            |  |
| Drawing File Name<br>BCIDE-JAC-ENV_BC-0304_XX_00-DR-GG-0103  | Sheet Number<br>3 of 3 | Status<br>A | Rev<br>M01 |  |

The background of the slide is a vibrant yellow. It is decorated with several abstract, overlapping shapes in shades of blue and green. These shapes include rounded rectangles, elongated ovals, and curved bands. Interspersed among these shapes are several white circles of varying sizes, some of which are partially enclosed by the colored shapes. The overall aesthetic is modern and geometric.

## 21.2

Cumulative Effects:  
Shortlisted Planning  
Applications and other  
Projects within 500m



- Legend :**
- Ballymun/Finglas to City Centre Core Bus Corridor Scheme
  - 500m buffer
  - 350m buffer
  - 300m buffer
  - 250m buffer
  - 50m buffer
  - 🏠 Strategic Housing Development (SHD)
  - Scheme D1 Screened Application
  - Local authority boundary

This drawing is not to be used in whole or in part other than for the intended purpose and project as defined on this drawing. Contains Irish Public Sector Data licensed under a Creative Commons Attribution 4.0 International (CC BY 4.0) license.



**Disclaimer**  
a. © National Transport Authority (NTA) 2022. This drawing is confidential and the copyright in it is owned by NTA. This drawing must not be either loaned, copied or otherwise reproduced in whole or in part or used for any purpose without the prior permission of NTA.  
b. This drawing is to be used for the design element identified in the title block. Other information shown is to be considered indicative only. The drawing is to be read in conjunction with all other relevant design drawings.  
c. O.S. data used for plans are printed under © Ordnance Survey Ireland Government of Ireland. All rights reserved. Licence Number 2022/OSI\_NMA\_180 National Transport Authority. All elevations are in metres and relate to OSI Geoid Model (OSGM15) Mean Head. All Co-ordinates are in Irish Transverse Mercator Grid (ITM) as defined by OSI active local GPS station.  
d. Information concerning the position of apparatus shown on this drawing is based on drawings supplied by the utility owners and/or the utility works contractor, whilst every care has been taken in the preparation of this drawing, positions should be taken as approximate and are intended for general guidance only and no representation is made by the NTA as to the accuracy, completeness, sufficiency or otherwise of this drawing and the position of the apparatus. The information contained herein does not purport to be comprehensive or final as the apparatus is subject to being altered and/or superceded. Recipients should not rely on this information. Any liabilities are hereby expressly disclaimed.e. The information contained herein has been provided by the NTA but does not purport to be comprehensive or final. Recipients should not rely on the information. Neither the NTA nor any of its directors, officers, employees, agents, stakeholders or advisers make any representation or warranty as to, or accept any liability or responsibility in relation to, the adequacy, accuracy, reasonableness or completeness of the information provided as part of this document or any matter on which the information is based (including but not limited to loss or damage arising as a result of reliance by recipients on the information or any part of it. Any liabilities are hereby expressly disclaimed.

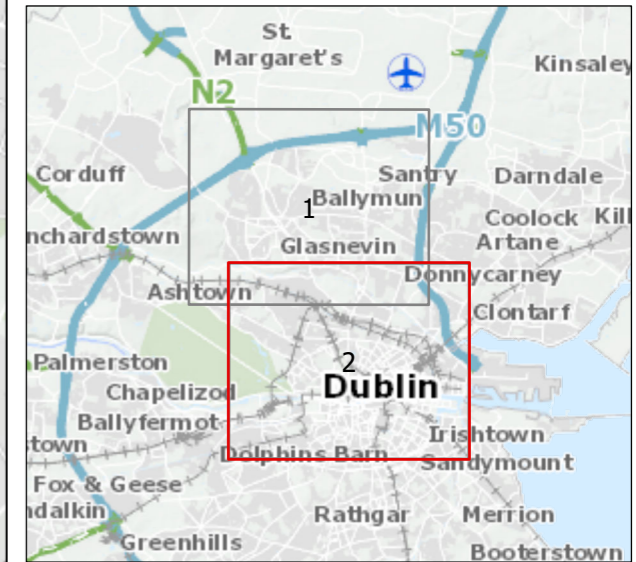
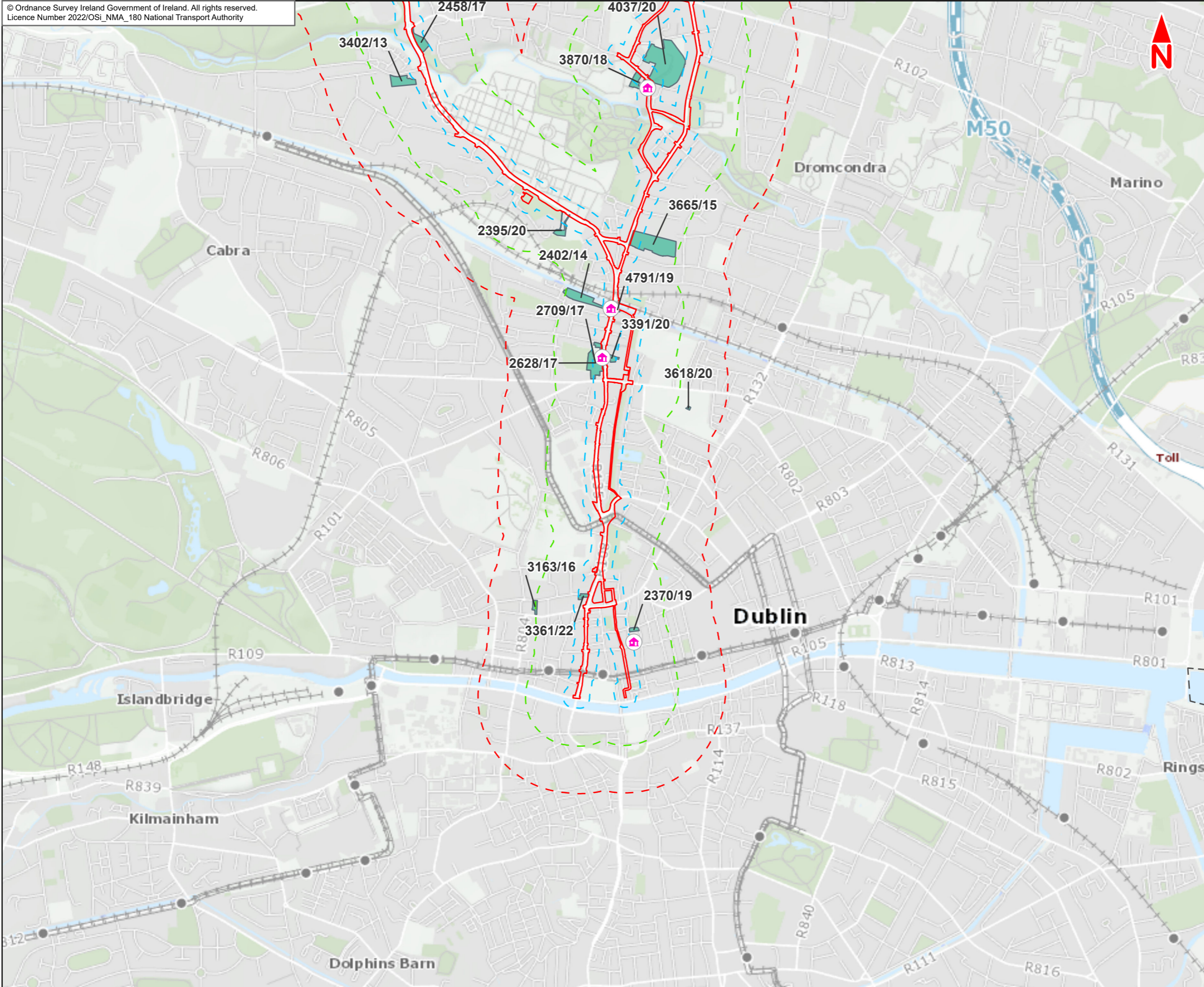
Rev M01 Jul 2022 KJ PW DK  
Description ISSUE FOR PHASE 4 : PLANNING



|              |   |                 |          |
|--------------|---|-----------------|----------|
| Client       | NTA<br>Udarás Náisiúnta Iompair<br>National Transport Authority |                 |          |
| Date         | 06/07/2022  | Scale @ A3      | 1:20,000 |
| Project Code | BCIDE   | Originator Code | JAC      |

|            |                       |         |    |
|------------|-----------------------|---------|----|
| Consultant | Jacobs<br>ARUP SYSTRA |         |    |
| Drawn      | KJ                    | Checked | PW |
| Approved   | DK                    |         |    |
| QMS Code   |                       |         |    |

|                   |   |              |        |
|-------------------|---|--------------|--------|
| Programme Title   | BUSCONNECTS DUBLIN<br>CORE BUS CORRIDORS INFRASTRUCTURE WORKS   |              |        |
| Drawing Title     | Ballymun/Finglas to City Centre Core Bus Corridor Scheme<br>Figure 21.2<br>Cumulative Effects: Shortlisted Planning Applications and other Projects within 500m |              |        |
| Drawing File Name | BCIDE-JAC-ENV BC-0304 XX 00-DR-GG-0201  | Sheet Number | 1 of 2 |
| Status            | A   | Rev          | M01    |



- Legend :**
- Ballymun/Finglas to City Centre Core Bus Corridor Scheme
  - 500m buffer
  - 350m buffer
  - 300m buffer
  - 250m buffer
  - 50m buffer
  - 🏠 Strategic Housing Development (SHD)
  - Scheme D1 Screened Application
  - Local authority boundary

This drawing is not to be used in whole or in part other than for the intended purpose and project as defined on this drawing. Contains Irish Public Sector Data licensed under a Creative Commons Attribution 4.0 International (CC BY 4.0) license.



**Disclaimer**  
a. © National Transport Authority (NTA) 2022. This drawing is confidential and the copyright in it is owned by NTA. This drawing must not be either loaned, copied or otherwise reproduced in whole or in part or used for any purpose without the prior permission of NTA.  
b. This drawing is to be used for the design element identified in the titleblock. Other information shown is to be considered indicative only. The drawing is to be read in conjunction with all other relevant design drawings.  
c. O.S. data used for plans are printed under © Ordnance Survey Ireland Government of Ireland. All rights reserved. Licence Number 2022/OSI\_NMA\_180 National Transport Authority. All elevations are in metres and relate to OSI Geoid Model (OSGM15) Mean Head. All Co-ordinates are in Irish

Transverse Mercator Grid (ITM) as defined by OSI active local GPS station.  
d. Information concerning the position of apparatus shown on this drawing is based on drawings supplied by the utility owners and/or the utility works contractor, whilst every care has been taken in the preparation of this drawing, positions should be taken as approximate and are intended for general guidance only and no representation is made by the NTA as to the accuracy, completeness, sufficiency or otherwise of this drawing and the position of the apparatus. The information contained herein does not purport to be comprehensive or final as the apparatus is subject to being altered and/or superseded. Recipients should not rely on this information. Any liabilities are hereby expressly disclaimed.

e. The information contained herein has been provided by the NTA but does not purport to be comprehensive or final. Recipients should not rely on the information. Neither the NTA nor any of its directors, officers, employees, agents, stakeholders or advisers make any representation or warranty as to, or accept any liability or responsibility in relation to, the adequacy, accuracy, reasonableness or completeness of the information provided as part of this document or any matter on which the information is based (including but not limited to loss or damage arising as a result of reliance by recipients on the information or any part of it. Any liabilities are hereby expressly disclaimed.



| Rev | Date     | Drn | Chk'd | App'd | Description                  |
|-----|----------|-----|-------|-------|------------------------------|
| M01 | Jul 2022 | KJ  | PW    | DK    | ISSUE FOR PHASE 4 : PLANNING |

Client  
**NTA**  
Udarás Náisiúnta Iompair  
National Transport Authority

Consultant  
**JACOBS**  
**ARUP SYSTRA**

|  |                        |             |            |  |
|--|------------------------|-------------|------------|--|
| Programme Title<br><b>BUSCONNECTS DUBLIN</b>   |                        |             |            |  |
| CORE BUS CORRIDORS INFRASTRUCTURE WORKS  |                        |             |            |  |
| Drawing Title Ballymun/Finglas to City Centre Core Bus Corridor Scheme               |                        |             |            |  |
| Figure 21.2  |                        |             |            |  |
| Cumulative Effects: Shortlisted Planning Applications and other Projects within 500m |                        |             |            |  |
| Drawing File Name<br>BCIDE-JAC-ENV BC-0304 XX 00-DR-GG-0202                          | Sheet Number<br>2 of 2 | Status<br>A | Rev<br>M01 |  |

|                       |                        |             |               |                |
|-----------------------|------------------------|-------------|---------------|----------------|
| Date<br>06/07/2022    | Scale @ A3<br>1:20,000 | Drawn<br>KJ | Checked<br>PW | Approved<br>DK |
| Project Code<br>BCIDE | Originator Code<br>JAC | QMS Code    |               |                |